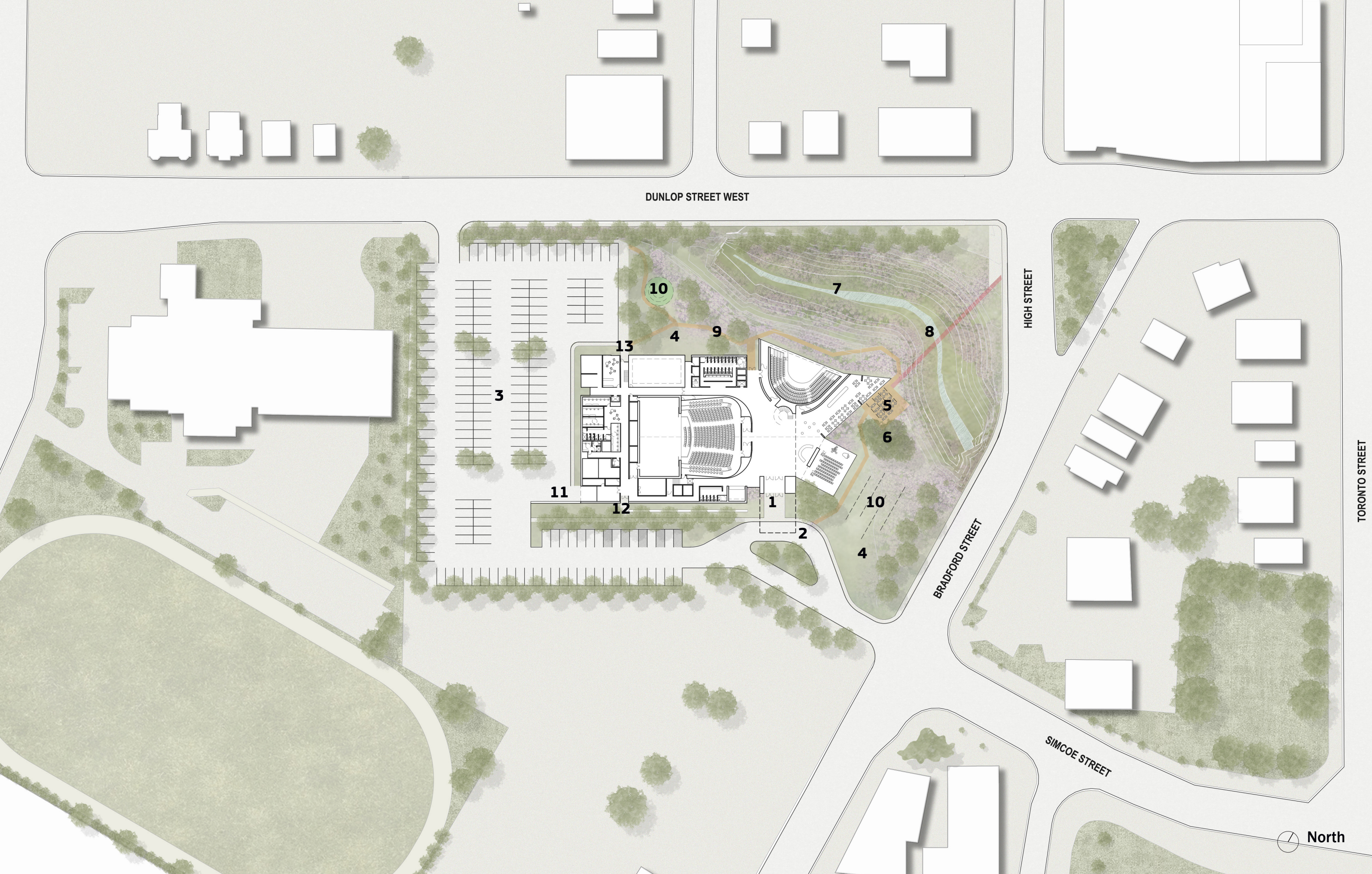


# A Home For Performing Arts In Barrie



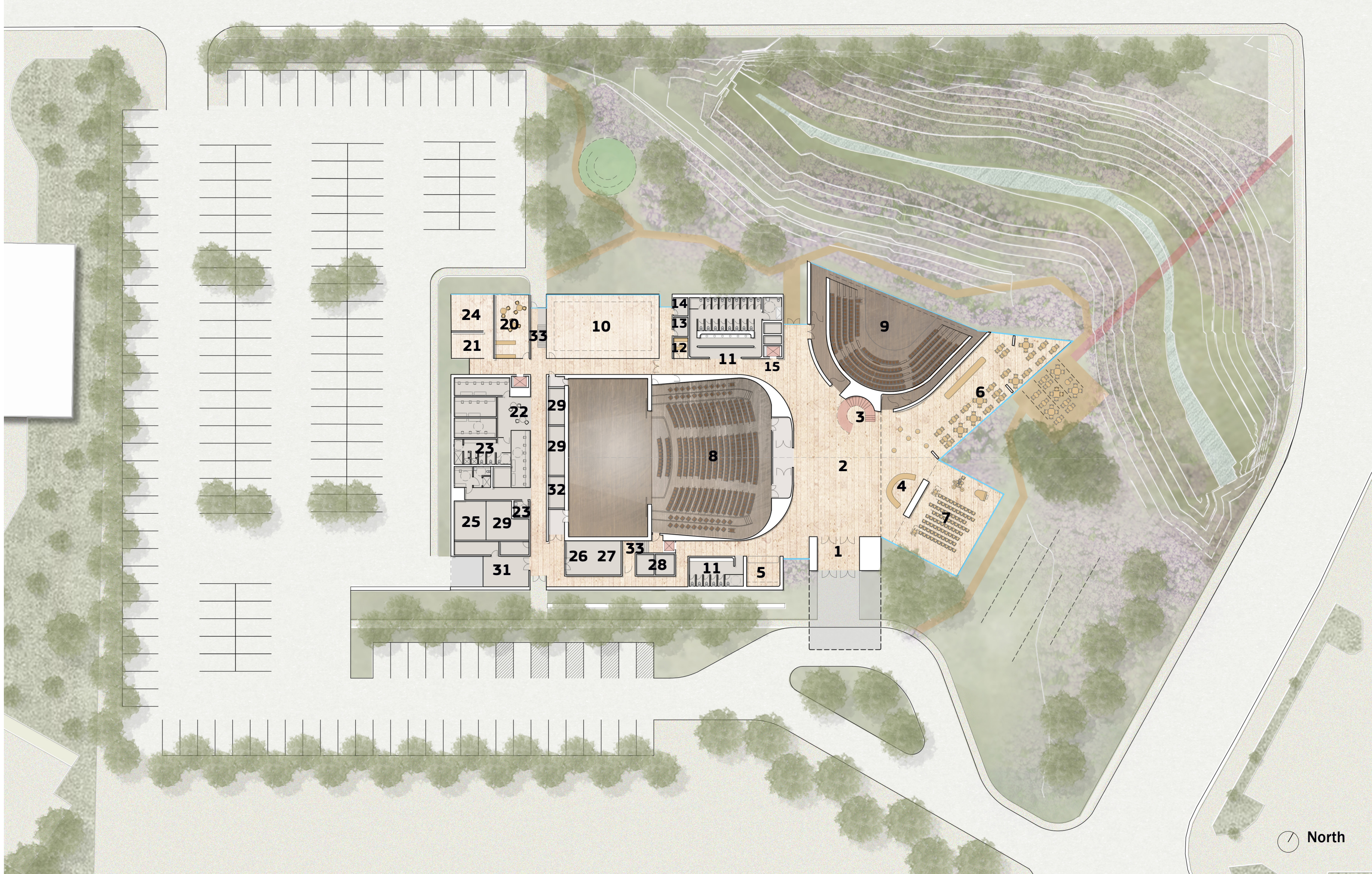
- Public Space**
- 1 Main Entrance
  - 2 Drop Off
  - 3 Parking
  - 4 Garden
  - 5 Cafe Terrace
  - 6 Existing Tree
  - 7 Kidd's Creek
  - 8 Bridge over Creek
  - 9 Garden Paths
  - 10 Outdoor gathering
- Back of House**
- 11 Loading
  - 12 Staff Access
  - 13 Rehearsal Entrance



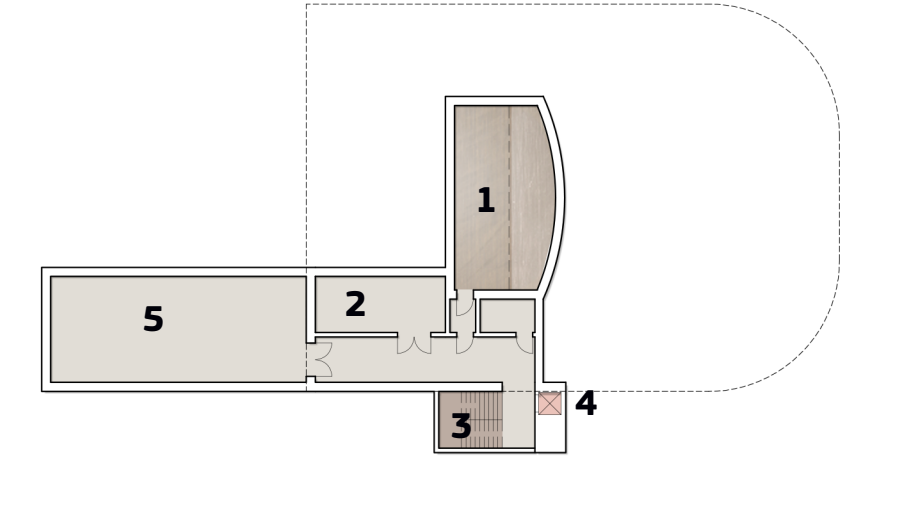
Site Plan  
1:1,000

- Public Space**
- 1 Main Entrance
  - 2 Commons
  - 3 Feature Stair
  - 4 Ticket/Welcome Desk
  - 5 Coat Check
  - 6 Cafe
  - 7 Forum
  - 8 Main Theatre
  - 9 Recital Hall
  - 10 Large Rehearsal Hall
  - 11 Washrooms (Gender Neutral)
  - 12 House Mgr
  - 13 First Aid
  - 14 Quiet Room
  - 15 Elevator
- Back of House**
- 20 Green Room
  - 21 Crew Room
  - 22 Dressing Rooms
  - 23 Washrooms
  - 24 Production offices
  - 25 Costume Maintenance
  - 26 Scenery workshop
  - 27 Lighting/Sound Workshop
  - 28 Servery
  - 29 Storage
  - 31 Loading
  - 32 Custodial
  - 33 Stair

Ground Floor  
1:500



- Back of House**
- 1 Orchestra Pit
  - 2 Instrument Storage
  - 3 Stair
  - 4 Elevator
  - 5 Mechanical Space TBD



Orchestra Pit  
1:500



**Cultural Corridor; Cultural Ecosystem:** The proposed location on the former site of the Fisher Auditorium at Dunlop St. and Bradford St. anchors the western end of the cultural corridor, enhances the existing downtown cultural institutions and connects to the waterfront as a visual end to Simcoe Street.

## Reach and Attraction

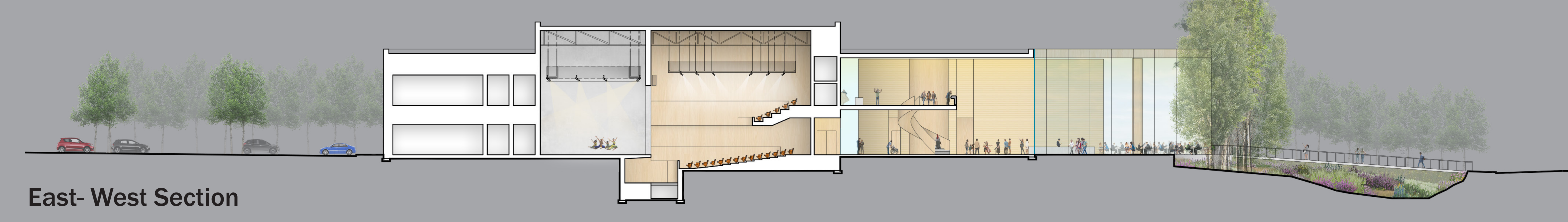
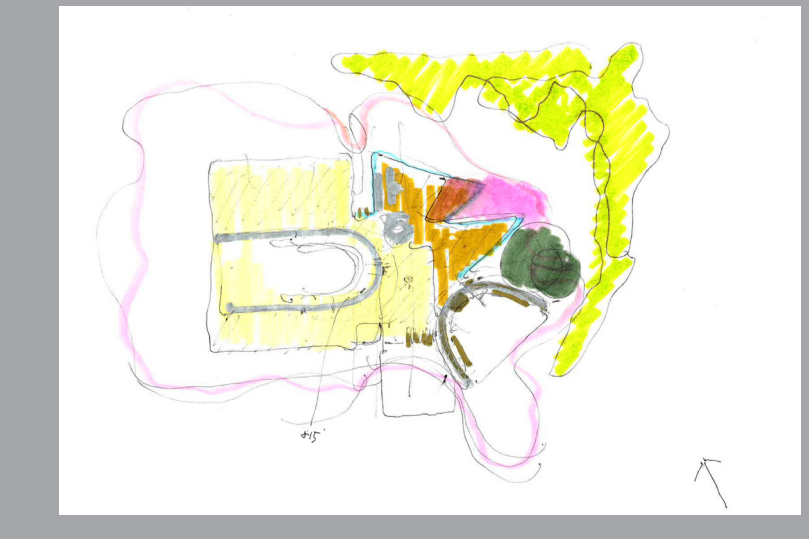
The Cultural Hub will be an attractor. Like a tree, the main performance space anchors the centre of the site and the various program elements reach out towards downtown, towards the waterfront and towards communities to the south, inviting artists, residents and visitors to see and engage the program. The recital hall is visible from Dunlop acting as a beacon and demonstration of the artistry within.



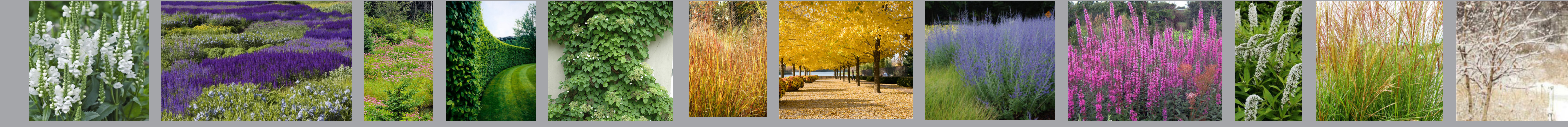
Massing Study Models

## Theatre in a Garden

Taking cues from the Kidd's Creek revitalization, the centre reaches north and east, interspersing interior program with views and access to a four-seasons garden. A bridge connects the corner of Dunlop and Bradford streets with the gardens, an exterior terrace and direct entry to the heart of the Cultural Hub.



East- West Section



# The Cultural Hub

The cultural hub model offers much more than the sale of a ticket to see a show.

It is a hangout, it is a place for the exchange of ideas, for education, creative development, maker spaces and celebratory events. It escapes the “hoity toity” feeling that can deter engagement. It is a beacon of vitality and activity. It will become a key player in the revitalization of downtown.

The “commons” is the heart, the space that links all program elements, where you can feel the energy of activity emanating from the spaces. Informal performance, education and gathering spaces live within and around the commons. A feature stair connects the balcony level, maker spaces and a second floor terrace with views to Lake Simcoe.

**Vision for the Cultural Hub:**

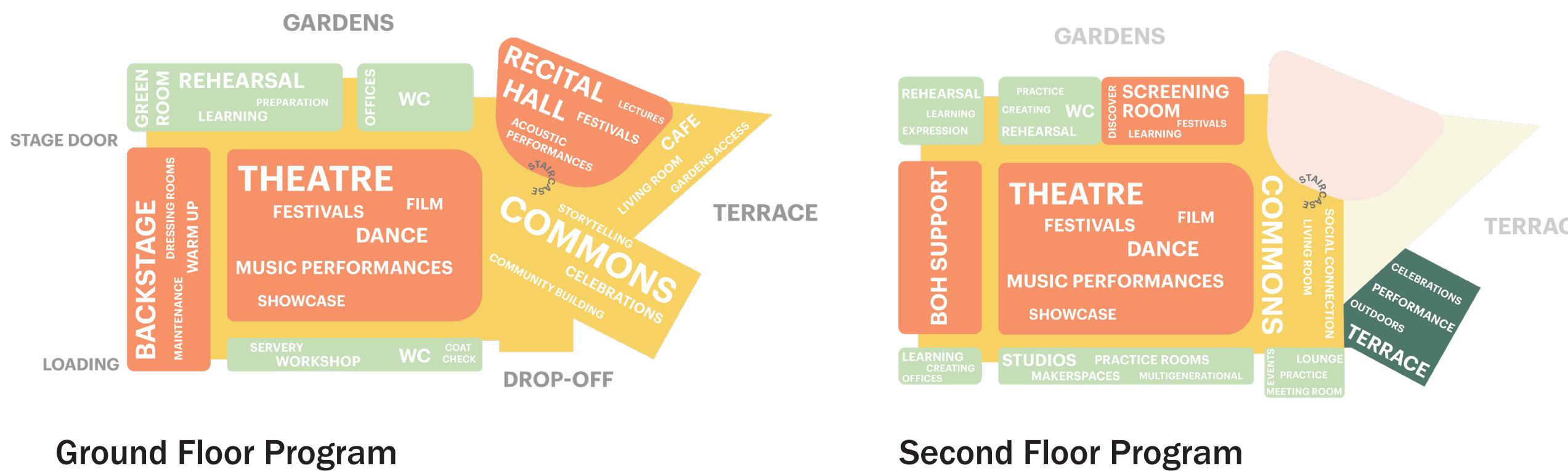
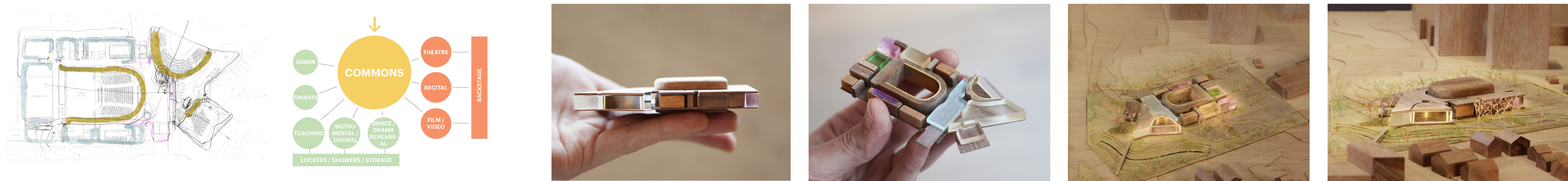
- A place for all interests, ages, abilities and sectors of the community
- A place that is busy morning, noon and night
- A place that provides a multiplicity of opportunities and experiences

**The Cultural Hub provides in equal measure:**

- Entertainment and appreciation
- Meaningful participation
- Learning and skills development

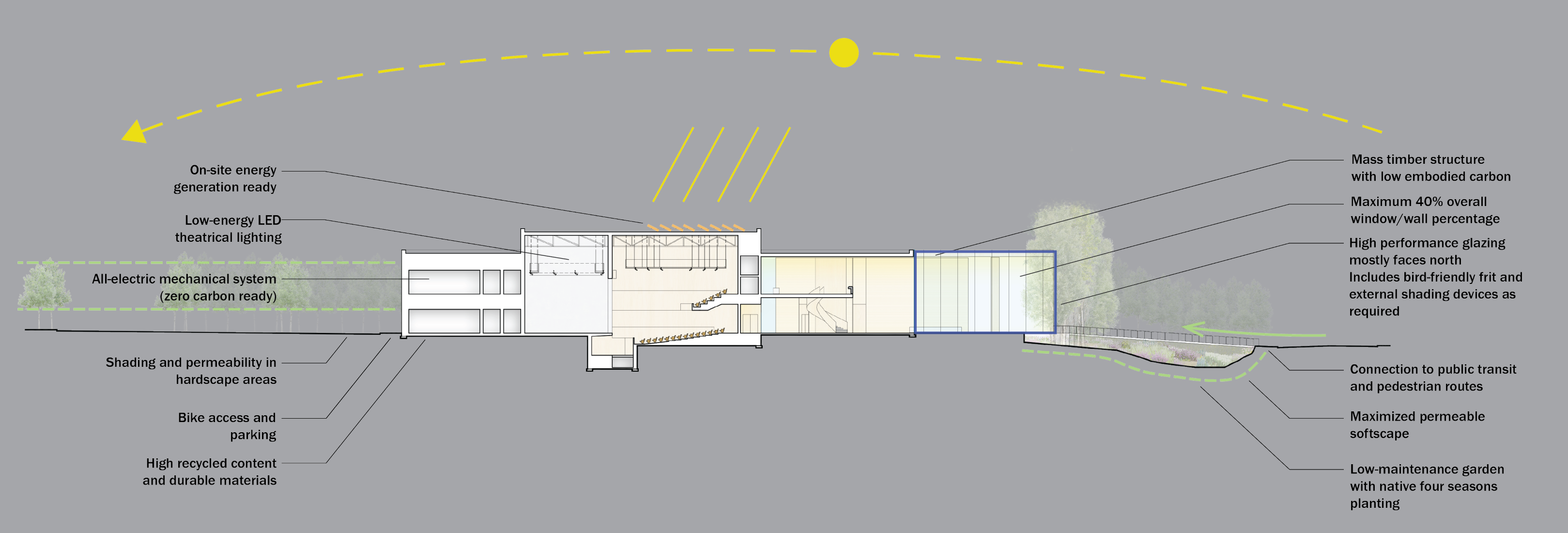
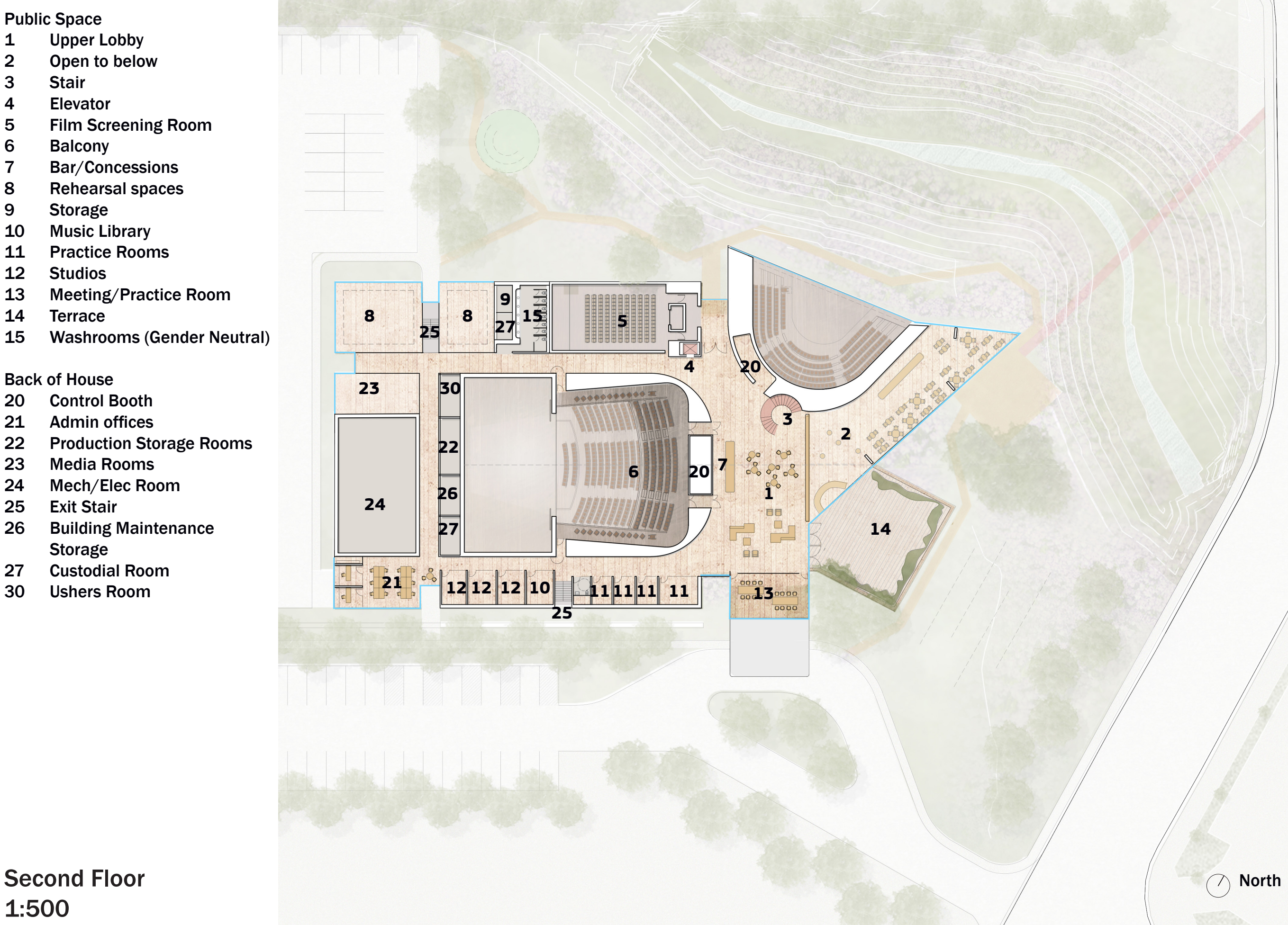
**The cultural hub is more than a performing arts centre:**

- A Cultural Hub speaks to local cultural development needs
- A Cultural Hub provides a greater variety of spaces and opportunities
- A Cultural Hub is more socially inclusive



## Radical Accessibility

The cultural hub concept relies on porosity, both visual and physical. Barrie has the opportunity to be a leader in accessibility. The building will have a convenient drop-off and clear entry experience with simple, intuitive wayfinding; always engaged with the central commons. The performance spaces will provide a range of seating options that accommodate larger mobility devices and are equipped to share the experience with all. All performer and producer spaces will have best-in-class accessibility. Quiet spaces will be available nearby for sensory breaks.



## Zero Carbon Ready

Barrie's Cultural Hub has the opportunity to become one of the first CAGBC Zero Carbon performing arts buildings in Canada!

**HARIRI PONTARINI ARCHITECTS**